

Fire detection and evacuation solutions that save lives.

8 Way Sounder Output Board

Features

- 8 x Monitored Sounder Outputs
- Fully programmable
- Suitable for use with the FireFinder range of panels
- Suitable for use with LoopSense
- Suitable for use with ZoneSense Plus

Description

The 8 Way Sounder Output board has been designed to interface with AMPAC's range of Fire Alarm Control Panels (FACP's).

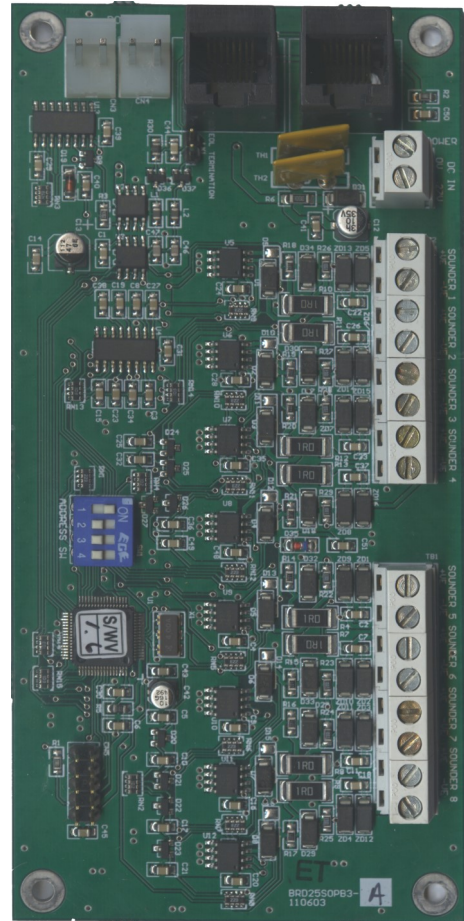
The 8 Way Sounder Output Board allows for the number of sounder outputs to be expanded above the limit set by a standard FACP

The 8 Way Sounder Output board supports 8 monitored Sounder Outputs and connects to the FACP via the internal dedicated RS485 communications port.

A maximum of 15 boards can be fitted to the FireFinder, FireFinder Series II, FireFinder Plus and LoopSense FACP's

A maximum of 1 Board can be fitted to the ZoneSense Plus.

The Sounders are configurable using the Configuration Programs such as ConfigManager (FireFinder range of panels), LoopMaster (LoopSense) or via the front panel (ZoneSense Plus).



8 Way Sounder Output Board

Item Numbers

4310-0060	8 Way Sounder Board
-----------	---------------------

Specifications

Operating Voltage	27VDC
Quiescent current	5.6mA
Max current	26mA
Sounder O/P	27V @ 500mA
System Capacity	
FireFinder	15 Maximum
LoopSense	15 Maximum
ZoneSense Plus	1 Maximum
Temperature	-20°C to 70°C
Humidity	0% - 95% non condensing
Dimensions	155mm (L) x 72.5mm (W)
Weight	100 grams