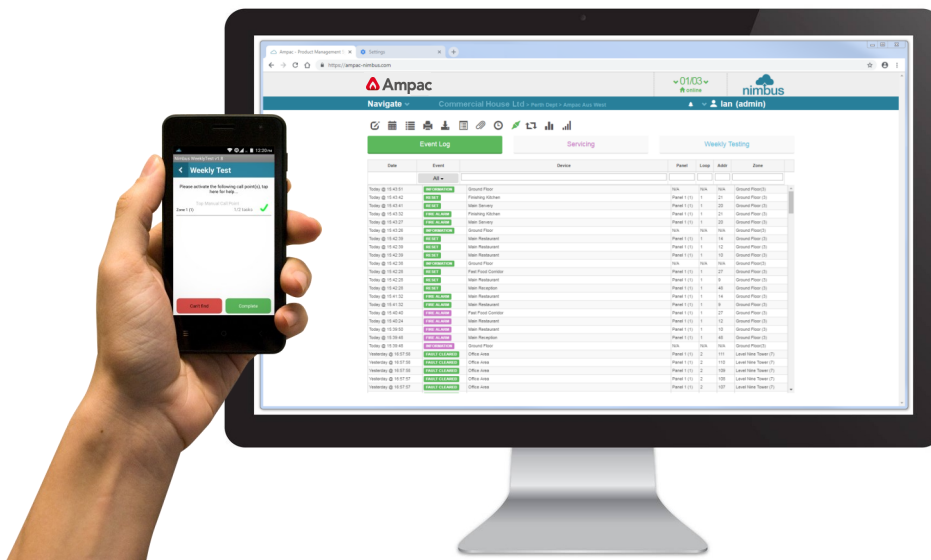


Fire detection and evacuation solutions that save lives.



## Cloud Based Fire Alarm Management



Nimbus is a non-intrusive add-on to the Ampac FireFinder and FireFinderPLUS range of control panels and communicates to a cloud hosted database using the Nimbus Dual Path Gateway.

Event notifications are recorded to an infinite history log that can be accessed via a standard web browser.

Nimbus is the ideal tool for building owners, facility property managers and fire alarm service & maintenance providers who need to receive live event notifications from their connected fire alarm systems.

### Features

- Simple Receive event notifications by email or mobile application (Android or iPhone)
- Subscribe users to events (fires, faults, pre-alarms & disablements)
- Attribute additional event notes following device activity
- Provide independent evidence of historical events
- Non-intrusive and simple to install

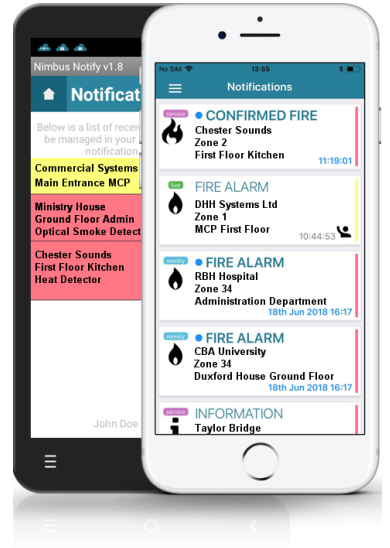
## Fire detection and evacuation solutions that save lives.

### Mobil App Notifications

Utilising push notifications allows a smartphone to receive and display Nimbus events even when the smartphone is locked and the application closed.

Nimbus is totally configurable with user selectable sounds and repeat alerts. Upon receipt of an event, users can attribute notes describing the cause of the event, ideal for identifying false or unwanted alarms at a later date.

Notifications detail client name, site name, event type, and device description. The associated panel, loop, address, zone # and description are also displayed in an easy to read format aiding response.



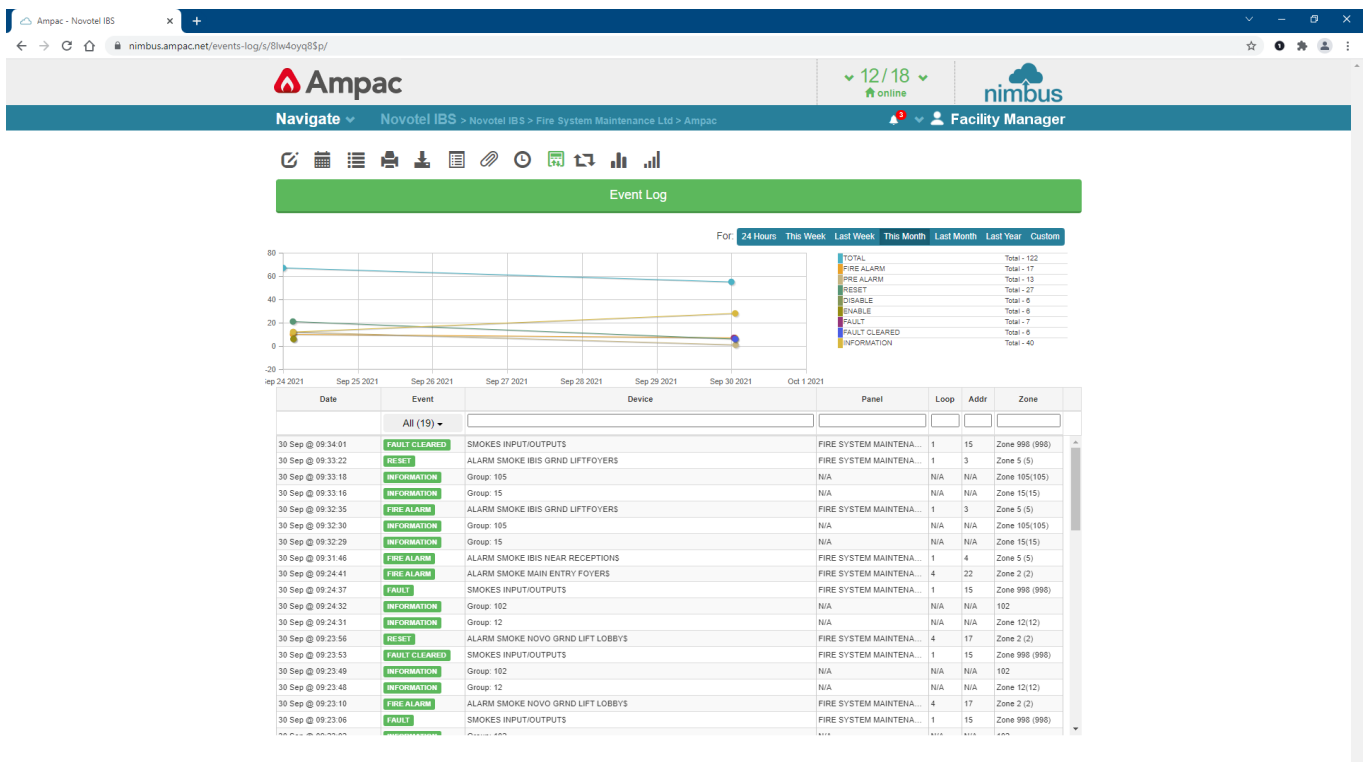
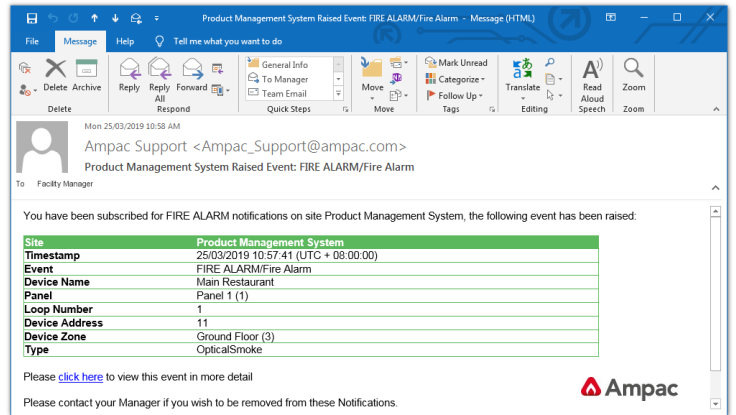
### Email notifications

Any number of recipients can receive email notifications based on the event type such as Fire Alarm, Device Fault, Pre-alarm or Disabling.

### Web Dashboard

Event notifications are recorded to an infinite historical event log which users access through a web browser from where the data can then be reviewed in textual or graphical format.

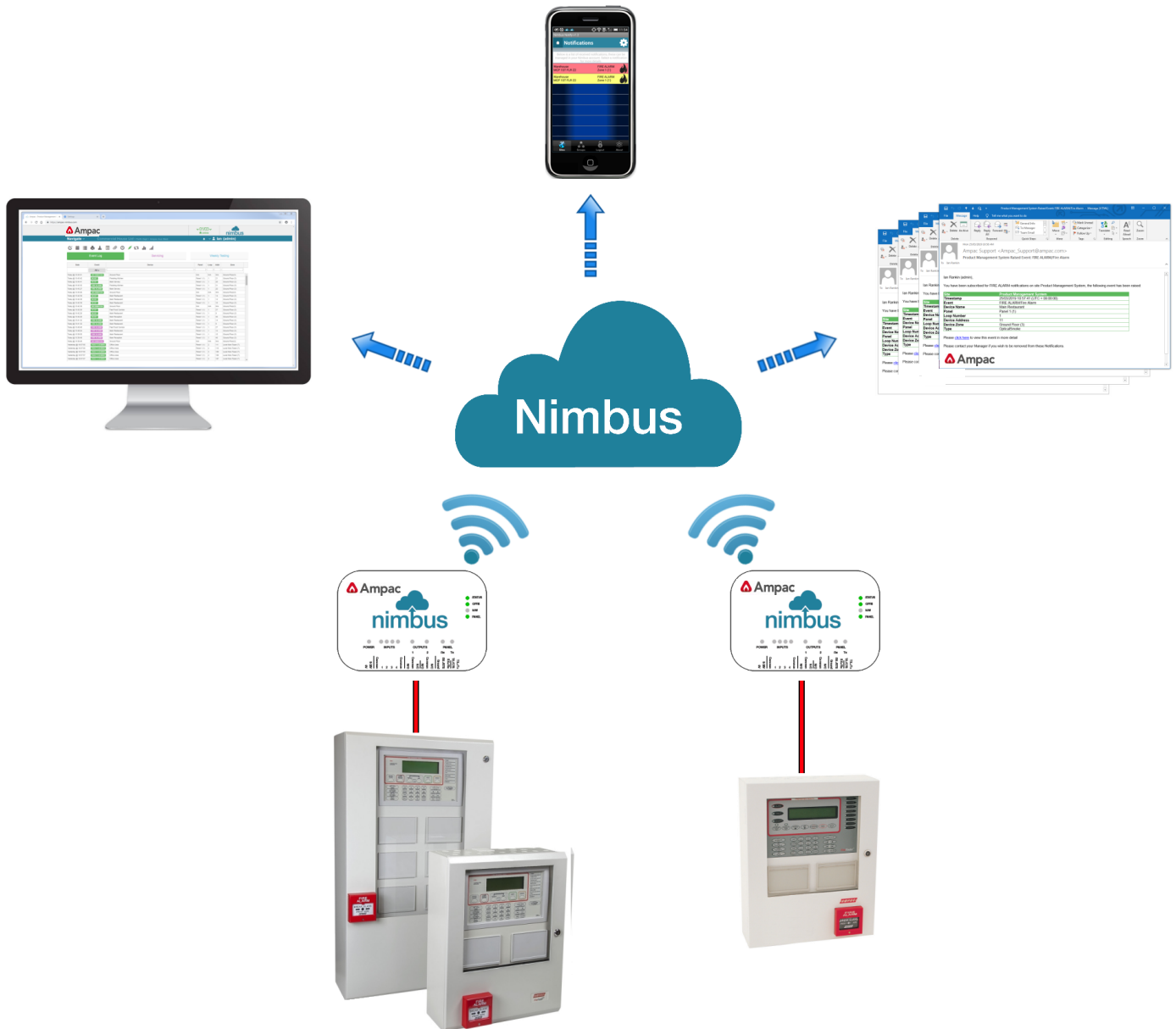
Gateway setup and configuration along with system administration of user and manager account privileges are catered for through the secure web browser portal.



Fire detection and evacuation solutions that save lives.

### Dual Path Nimbus Gateway

Connectivity to the Nimbus web portal is provided using the Dual Path Gateway offering both Ethernet and GPRS communications to the internet. With both paths are configured, the Gateway will default to its primary Ethernet connection with secondary GPRS communications becoming available automatically should the primary path fail.



### Item Numbers

- 4100-3005 Dual Path Annual Subscription
- 4310-0099 FF PLUS Dual Path Gateway Module
- 4310-0101 FF (HLI) Dual Path Gateway Module