

Fire detection and evacuation solutions that save lives.

SmartView

Graphical Event Management System



SmartView is a fully featured graphical event management system that has been designed to complement the Ampac range of fire control panels while presenting clear and precise alarm information to the operators enabling them to make emergency decisions with minimal delay.

Features

- Simple graphical navigation with rapid location of event
- Easy to operate user interface
- Historical event logs all activity
- Zone and device text displayed from panel
- Event response action text
- Assignable user log-in permissions
- Extensible architecture

Fire detection and evacuation solutions that save lives.

Overview

SmartView is a truly extensible web-based, client server application whose primary role is dedicated to the monitoring of fire detection systems, from a single building installation employing one fire detection system to large multi-campus, multi-building facility, **SmartView** is more than capable. The system can also be tailored to monitor non-fire related events such as Supervisory, Security and Process alarms. In addition, extensive audit trail facilities allow comprehensive management of all event situations while command and control of remote systems can be undertaken seamlessly.

Despite its sophistication, **SmartView** remains simple to setup and configure. No two projects are ever the same which makes **SmartView** the ideal solution to today's innovative building designs and comprehensive site wide alarm systems.

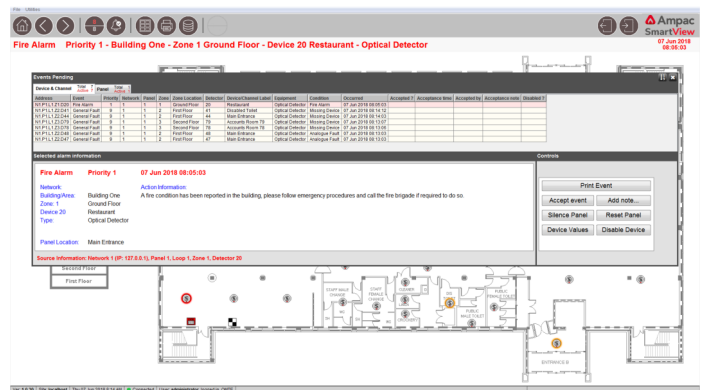


Applications include:

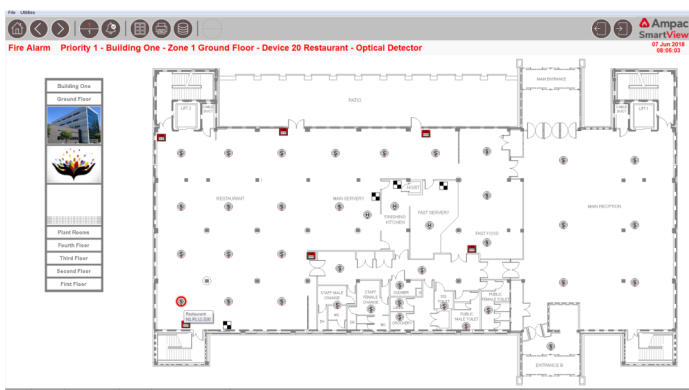
- Airports
- Shopping Centres
- Hospitals
- University Campus
- Industrial Sites
- School and Hotels
- City Wide Housing Authorities
- Power Generation



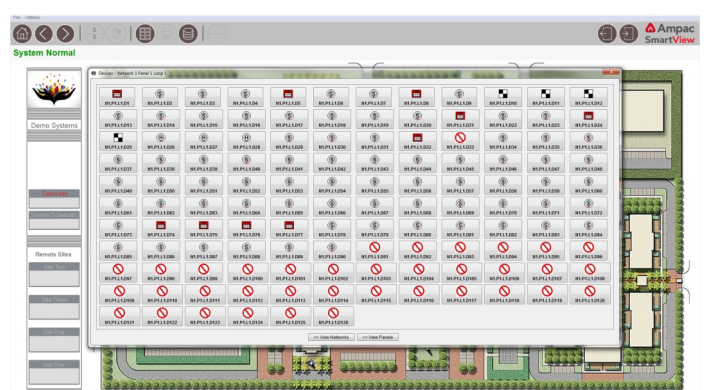
Site Overview



Event Manager and Control



Floor Layout

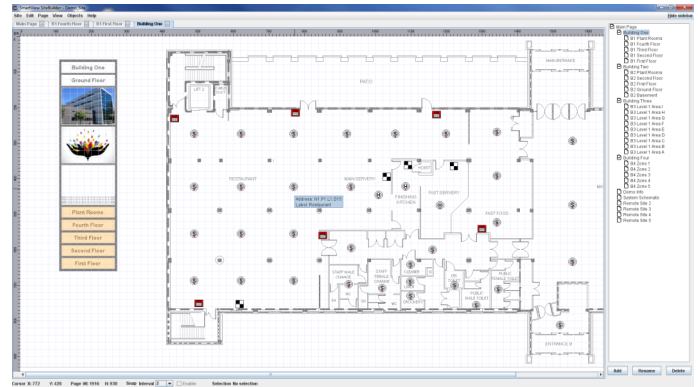


Device Assignment Table

Fire detection and evacuation solutions that save lives.



Site Builder



Create pages, navigational routes and add dynamic links and device icons

Command Control

Visual & Audible Alarms

As events occur, **SmartView** will display the status of automatic detectors, manual break glass call points, sprinkler systems and interface devices while monitoring the condition of critical equipment such as sounder controllers, fire doors, lift controllers and smoke fans. The facility to zoom in on geographical map pages, enable the emergency situation within the building to be precisely pinpointed providing rapid recognition and identification of source. Audible alarms and automatic intervention procedures can be tailored to the system installation, providing unique guidance on action to be taken by the operator for each particular event.

Alarm Messages

Individual devices connected to the **SmartView** system can each have a unique location text description, alarm type header text message and priority alarm level number assigned. These text messages together with a common action information text message can be viewed by the operator during an alarm condition.

System Interrogate

The interrogate facility allows the operator to control individual remote fire panels to initiate basic commands such as silence alarms, panel reset and evacuate. Additional commands can be sent to permit the disablement of detectors and interfaces, viewing of individual device analogue values, loop device quantities and text listings.

Alarm History

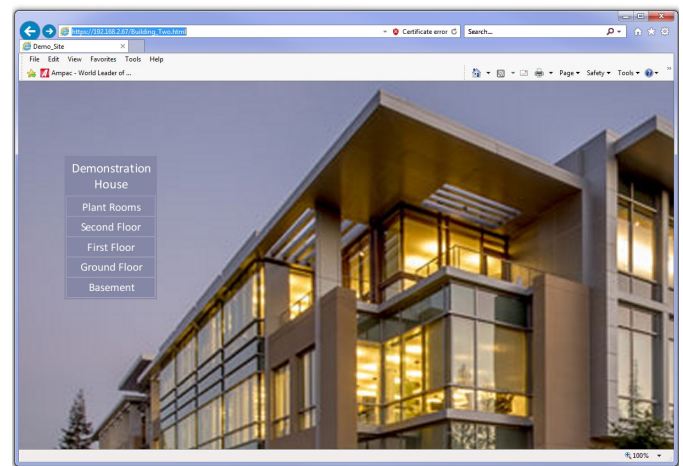
A powerful archive facility stores information on the type of event, when it occurred and who actioned the response. A unique note tagging facility is also incorporated to enable specific information about the incident to be attributed and stored against each individual alarm. The advanced alarm search facility enables the user to filter alarms by type, priority, panel or zone allowing them to be displayed for a given day or range of days. The historical data can also be exported to an industry standard format, such as Excel, providing additional information to supplement an audit trail or incident report.

Event Pending Display

During alarm conditions, the events are prioritised as they occur, displaying the most critical event information foremost in priority order enabling prompt user intervention at all times.

Computer Recommendations (minimum spec)

Intel Core i7 CPU 3.2 GHz, 64 bit operating system with 8 GB RAM. 24" monitor, mouse and keyboard

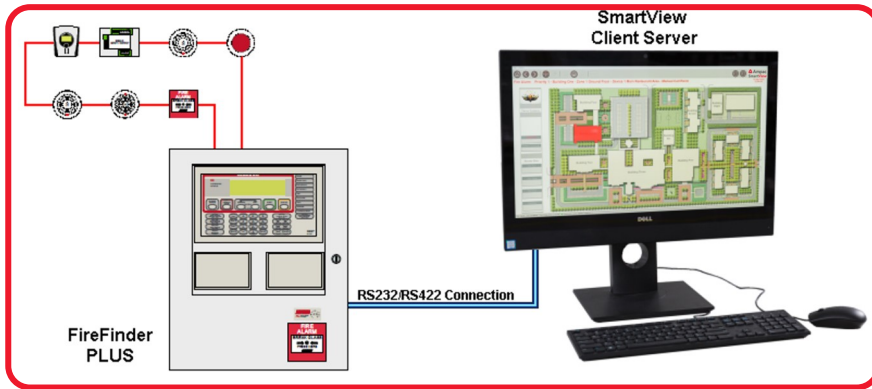


Web browsing to graphical pages

Item Numbers

4100-1004	Server licence with 4 Loops support and 1 Client & 2 browser connections
4100-1005	Additional Client
4100-1016	Upgrade to Server 4 - 16 Loops
4100-1032	Upgrade to Server 4 - 32 Loops
4100-1064	Upgrade to Server 4 - 64 Loops
4100-1128	Upgrade to Server 4 - 128 Loops
4100-1256	Upgrade to Server 4 - 256 Loops
4310-0095	Panel RS232/RS422 Interface
4310-0096	Panel Ethernet Interface
4100-2001	Desktop computer with SmartView pre-installed. Site licence not included
4100-2002	LED-backlit LCD Monitor - 24"

Fire detection and evacuation solutions that save lives.



From a single fire alarm panel connected to a SmartView Server and local Client...

to a complex multi panel, multi network installation incorporating a SmartView Server with distributed remote Clients.

Connection to Server can be made using RS232 (max distance 15M), RS422 (2KM using Beldon 9729 cable) or Ethernet .

