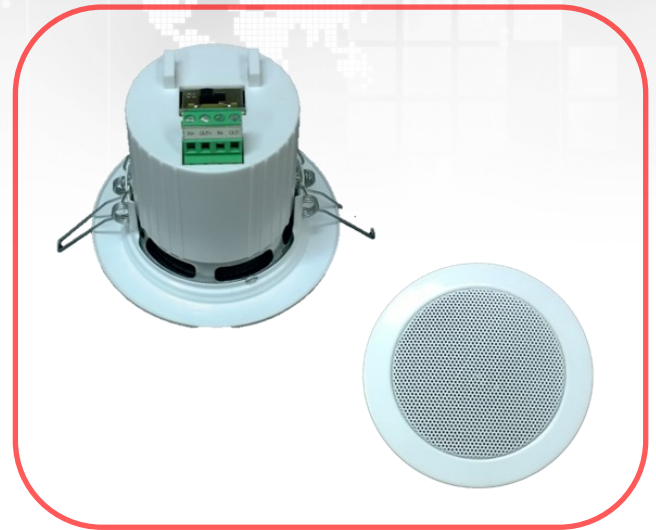




70mm 100V 2.5W Ceiling Speaker

Features

- 70mm speaker cone
- Operates with 100 volt speaker line
- Three (3) power output settings
- Speaker grille incorporated with speaker
- Capacitor fitted for line monitoring
- Enclosed transformer
- Unique cable restraint



70mm 100V 2.5W Ceiling Speaker

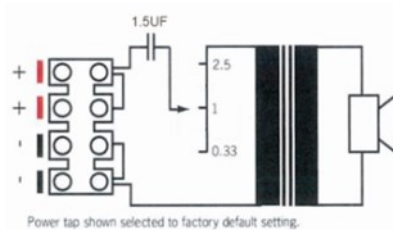
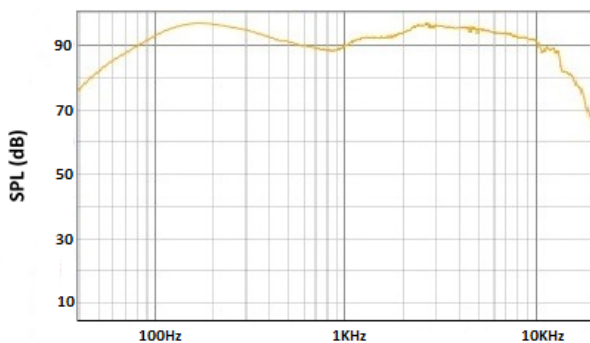
Description

The 70mm ceiling speaker is ideal for use in a wide range of applications including Emergency Warning Systems (EWS), Background Music (BGM) and Public Address (PA) paging within offices, warehouses, hotels and shopping centers.

Item Number & Specifications

Item Number	Power Taps	SPL 1W @1m	Frequency Response	Grille Material	Grille Diameter	Grille Colour	Ceiling Cutout	Mounting Depth	Overall Weight
4113-1003	0.33W, 1.0W, 2.5W	88.9dB	100Hz—15kHz	Steel	105mm	White	85mm	80mm	425g

Frequency Response (SPL 1W @ 1m)



Installation Instructions

- Cut 85mm diameter hole in the ceiling or ceiling tile.
- Run cable through the hole and connect to speaker terminals.
- Turn the spring retaining clips upward.
- Push the speaker into the hole and release the spring retaining clips.