

High Level Interface Expander Board

Features

- Supports RS232 and RS485 Communications interface to External Systems
- Compatible with FireFinder and FireFinder Plus Fire Control Alarm Panels
- Easy to configure using the Configmanager tools
- Provides interfaces between the Fire Alarm panels and the following applications:
 - Building Management
 - Nurse Call Systems
 - EV3000
 - SmartGraphics^{HD}
 - MODBUS

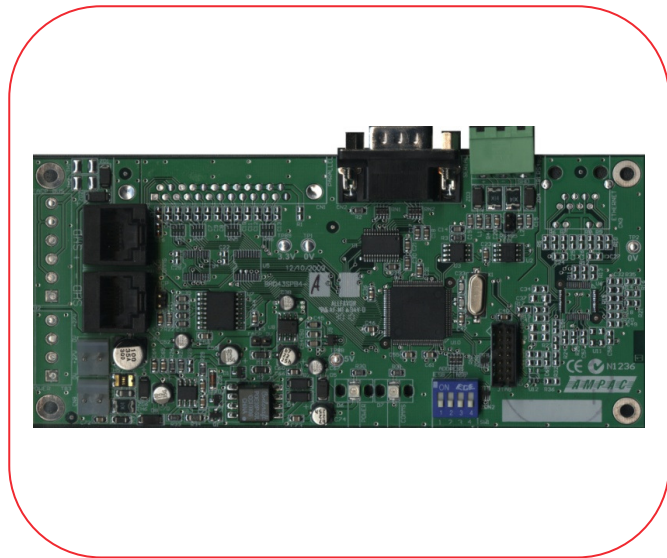
Description

The High Level Interface (HLI) Expander board provides the ability for the *FireFinder* and *FireFinder Plus* Fire Alarm Control Panels (FACP) to interface to a range of high level interface options using common communication protocols.

Individual FACP events such as fire, pre-alarms, disablements / isolates and faults can be configured to be passed to the various external systems for reporting and indication.

Item Numbers

4310-0080	HLI Expander Board
-----------	--------------------



HLI Expander Board

Specifications

Operating Voltage	27Vdc
Quiescent Current	37.5mA
Max Per Panel	3
Max Cable Lengths	
RS232 Comms	15m
RS485 Comms	1.2km
Temperature	-20°C to 70°C
Humidity	0 - 95% (non condensing)

