

Zone Disable and Indicator Module

Item Number: 4310-0087

Installation guide

Description

Monitors and Disables Zones

Eight push on / push off switches per card

Two Zone status indicators per switch (Alarm & Fault / Isolate)

The Zone Disable and Indicator Card Kit consists of;

- 1 x Zone Disable Module
- 1 x 220mm RJ45 Comms cable.
- 1 x 350mm RJ45 Comms cable

Installation

Observe anti-static precautions at all times

1. Unclip the PCB Assembly from the plastic housing
2. Slide in Zone Labels. Use LAB3100 label template.
3. Mount the plastic housing in the next free ancillary cutout in the Fire Alarm Control Panel.
4. Clip the PCB assembly back into the plastic housing

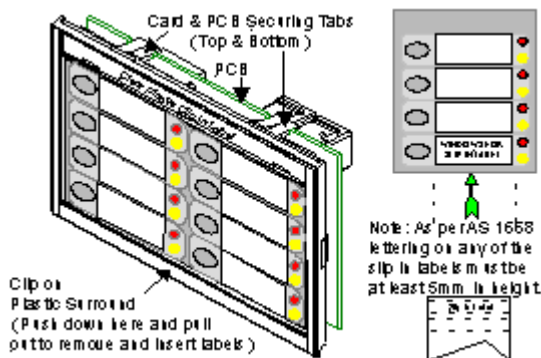


Figure 1: Zone Disable and Indicator Card (See LAB3100.doc for Slip In Label)

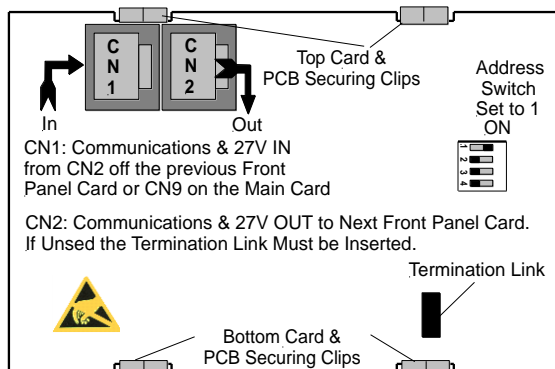


Figure 2: Zone Disable and Indicator Card PCB Layout

Connecting to the FACP

1. Power down the FACP
2. Set the required Address using the 4 way dip switch (Figure 2)
3. If fitted as the last module the EOL link needs to be fitted (Figure 2)
4. Using the supplied RJ45 cable connect the module to the applicable Fire Alarm Control Panel (FACP) (see Figure 3 & 4)
5. Power up the FACP
6. Using the applicable Configuration tool ConfigManager (FireFinder/Plus) or LoopMaster (LoopSense) configure the Zone Disable and Indicator Module as follows:

LoopMaster

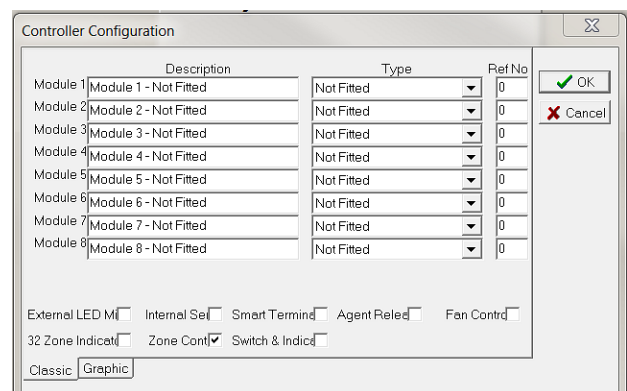
Add the module in the panel add-ons section

Then configure the applicable zones (Defaults Zones 1-8)



Configmanager

On the Controller Configuration panel select the Zone Cont



Then configure the applicable zones on the Zone Controller viewing pane

NOTE: A Maximum of 15 Cards can be fitted to the LoopSense Plus and FireFinder Plus panel range

Zone Disable and Indicator Module

Item Number: 4310-0087

Installation guide

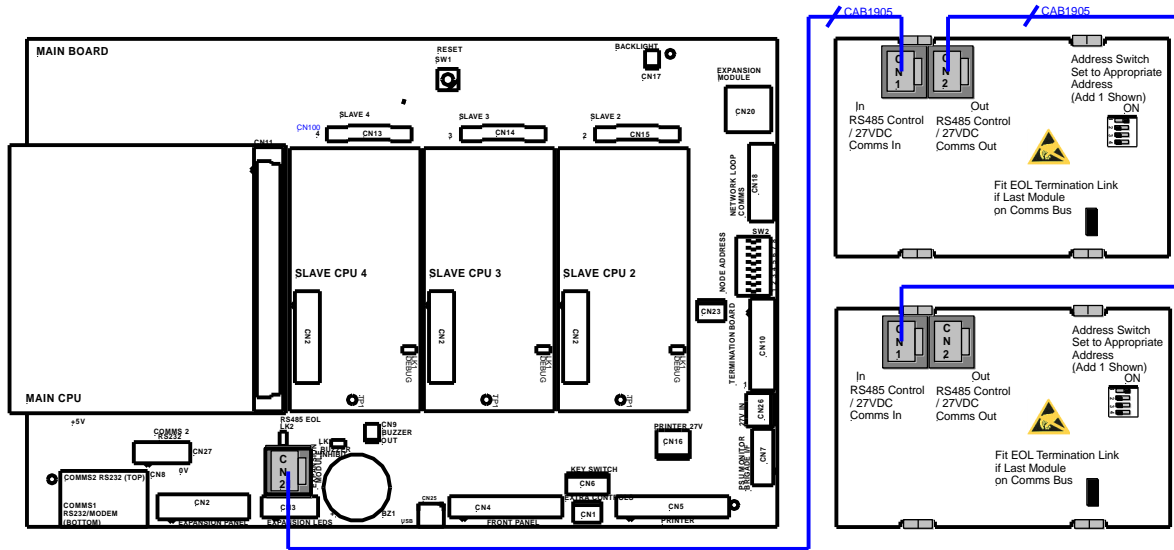


Figure 3: General Wiring Zone Disable and Indicator Card (FireFinder / Plus)

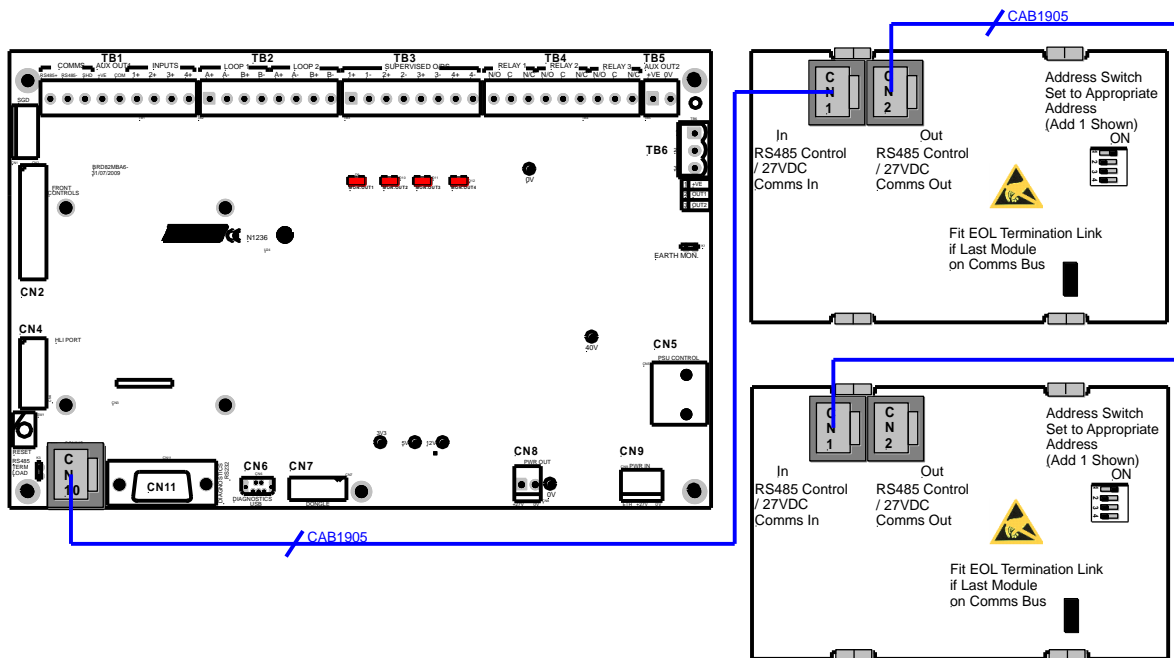


Figure 4 General Wiring Zone Disable and Indicator Card (LoopSense)